

Solderless Guitar Pedal Patch Cable Kit 6-Pack For Custom Pedalboard

Thanks so much for your order of the Kurrent Electric Solderless guitar patch cable kit. We value your business very much and hope that these cables will be a great new addition to your pedalboard. These instructions will help you on your way. Video instructions =====>

Instructional Video:
Kurrent Electric Solderless
Cables assembly instruction
video. Point your smartphone's
camera at this. :)



Instructions

1. Measure and cut the cable to the desired length. Do your best to cut the cable off clean and flush. (See fig. 1)
2. Do not strip the jacket. Just cut the cable flush. (See fig. 2)
3. Insert the cable into the 1/4" plug. (See fig. 3) Gently push it in and twist left and right to make sure a solid connection. There is a small pin down in the hole of the 1/4" plug. When you insert the cable the goal is to create a good connection with the copper wires in the center of the cable. You don't need to push it in all that hard to create this connection. In fact, I've found it best to just gently push it in and twist it just a bit and usually, that is enough. Sometimes when attaching the connector the copper strands will push out on the opposite side of the cable. If it did push some of these cables out just snip off the end so that it is flush and those loose strands are gone.
4. Bend the cable into the slot as you hold the connection down. (See fig. 4)
5. Attach the metal cap to the plug. (See fig. 5) If you want a straight cable instead of right angles you can skip steps 4 and 5 and go to step 6.
6. This next part is the trickiest part. Insert the screw into the threaded hole. It's not too bad. You can do it, and it gets easier after you assemble a couple of cables. This screw will secure the cable into the plug as well as piercing the jacket to ground the connection. I've found it helpful to assemble these over an area where the screw will be easy to find if you drop it. (See fig. 6)
7. As mentioned in step 3, once you have one connector attached, cut the other side of the cable's end flush again in case some of the copper strands pushed out while assembling the first connector.
8. Repeat for the required amount of patch cables.
9. It's highly suggested to test each cable individually after assembly to make sure you have a good connection. If necessary it's easy to disassemble and try again. We've included plenty of extra cable, more than most people need.

Troubleshooting:

I've used these cables for some time with my pedals and they work great; however, sometimes during assembly, the connection made isn't perfect resulting in a weak signal. That's why we recommend testing each cable after assembly. If the signal seems weak, no problem, just remove the 1/4" plug and try again. It's probably best to try with a fresh length of cable, but if there's enough left on the original cable, you can clip the end off flush and reuse it. Then you can reassemble the cable and test it again.

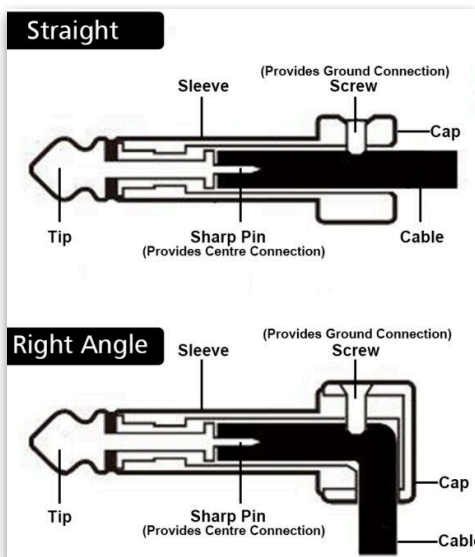
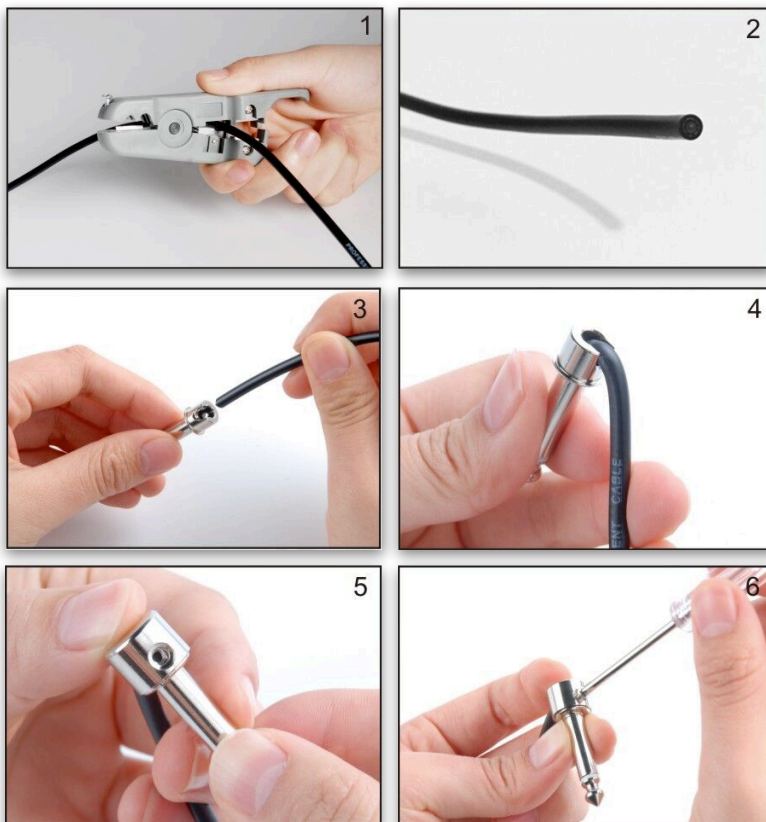
If you need further assistance or if you have any questions, please contact us. Message us through the marketplace where you purchased the cables. We are happy to help.



Kurrent Electric Solderless Guitar Cables

Every pedal chain is as unique as it's user. Sometimes, arranging effects and pedals in the order they need to be is a challenge, due to the length of available patch cables. These customizable, easy to assemble, low capacitance cables give you the freedom to set up your pedal chain the way you need it to be without restrictions.

1. Cut the cable to desired length.
2. Make sure it's a clean even cut.
3. Gently but firmly insert the cable into the plug. Don't use too much force.
4. Grasp the plug and pull the cable down through the notch.
5. Align the cap over the end of the plug (if using as a right angle cable) lining up the hole on the cap with the threaded hole on the plug.
6. Insert retaining screw and slowly tighten the screw being careful not to cross-thread or strip the screw head.



Kurrent Electric Solderless Pedalboard Cable Kit is the ultimate solution for customizing your pedalboard -

Your pedal chain your way.

www.kurrentelectric.com